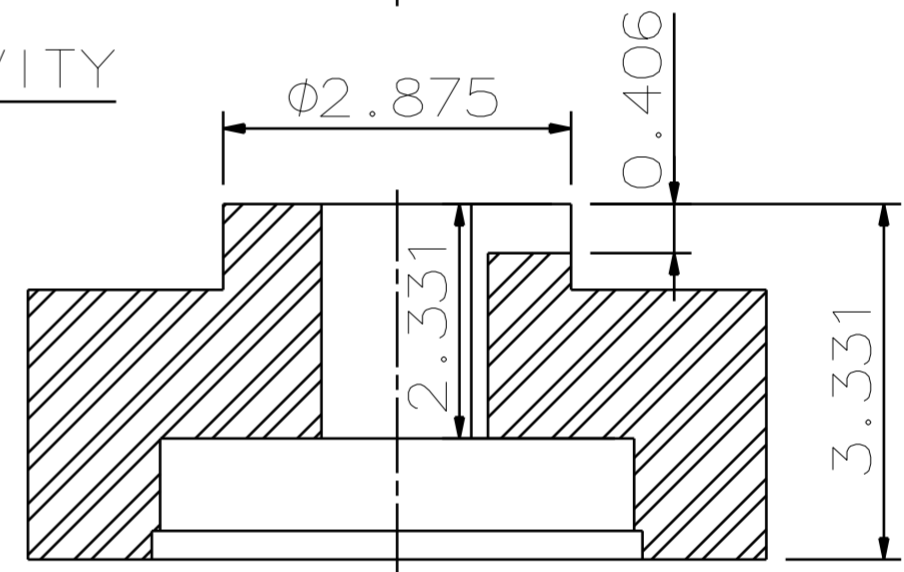
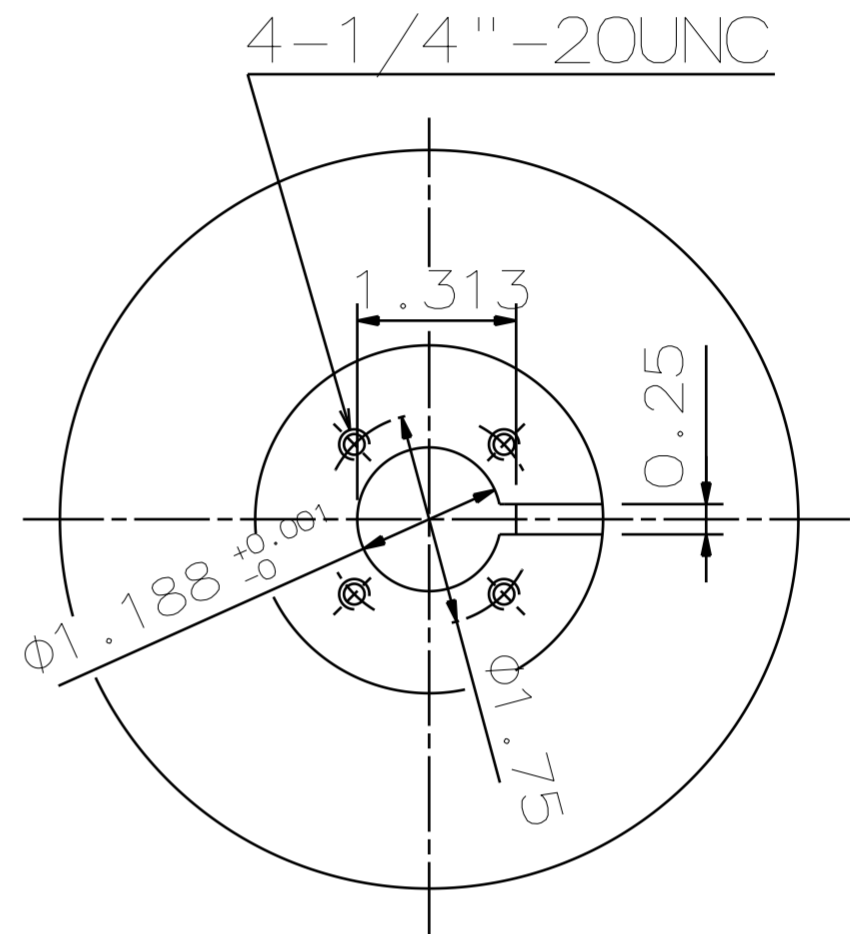
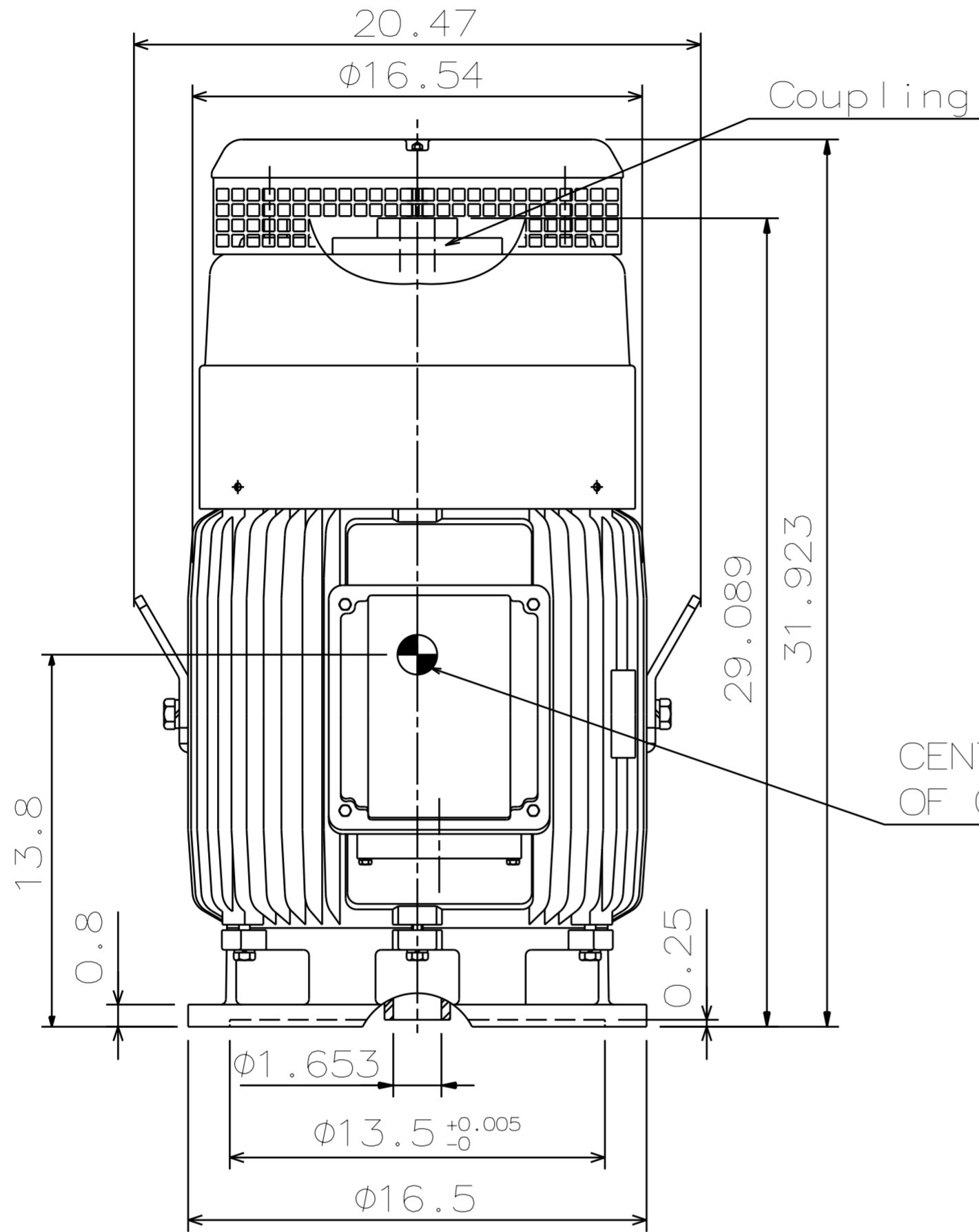


CATALOG NUMBER: VHTP0504	OUTLINE DIMENSIONS 3-PHASE INDUCTION MOTOR	MOTOR TYPE: AEEHNH
DATE OCT-03-2017		FRAME NO. 326TP

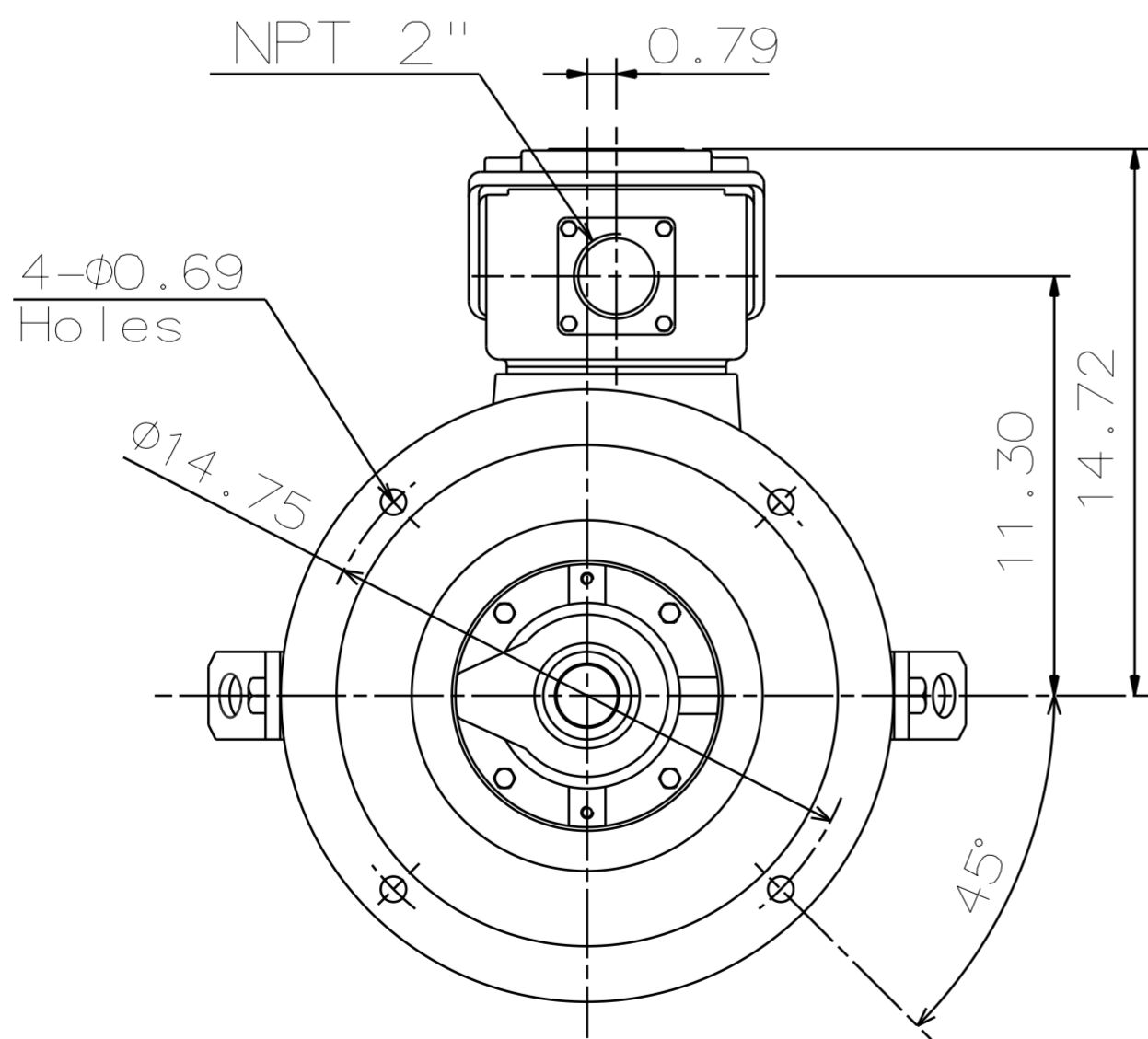
Pole	HP	kW	Hz	VOLT	r/min (rpm)
4	50	37.5	60	230/460	1800

Ins	Rating	Dimension in	Approx Weight	Bearings
F	CONT.	inches	780 LBS	DE: 6312C3 NDE: 7315BE

Totally Enclosed Fan Cooled Vertical Type. Squirrel-cage Rotor.



Coupling Dimension



Note:

1. IP44 Protection.
2. Rotation: C.C.W. (View from top)
3. With Ball Type N.R.R.
4. Down Thrust: 4500 lbs. (L10: 8800 hours)
5. Space Heater Rated At 120 volts. Leads Terminate In The Main Lead Box.
6. Reed Critical Frequency: 73.5 Hz.

TA17129-00-00

□		
---	--	--

DWG.	04.20.17
CHKD.	04.28.17
APPD.	04.28.17

TEC   Westinghouse

DWG NO.  
31057A557360